

## **Safer Staffing**

**January 2015**

## **Staffing Reports for January 2015**

Dorset HealthCare University NHS Foundation Trust reports on nursing staffing levels for all of its wards.

The Trust Board receives monthly information of ward staffing levels against locally set thresholds for shifts. For January's shifts this information was included in the Integrated Corporate Dashboard and Report - January 2015 and was reported to the Trust Board in March 2015. This part of the report is shown on page 3.

Information is submitted to the Department of Health across the NHS on the planned versus actual number of staffing hours per ward day and night each month. It includes nurses on duty who do not appear on the rota, for example ward sisters. This is published on NHS Choices. A copy of the Trust's nursing staffing return for January 2015 is shown on page 4.

## Integrated Corporate Dashboard and Report – January 2015

### Safer Staffing

	Ward	% Black Shifts			% Red Shifts			% Green Shifts		
		Nov	Dec	Jan	Nov	Dec	Jan	Nov	Dec	Jan
Bournemouth	Oakcroft	0%	0%	0%	0%	0%	0%	100%	100%	100%
	Pebble Lodge	0%	0%	0%	2%	2%	6%	98%	98%	94%
	AAU Seaview	0%	0%	0%	2%	4%	5%	98%	96%	95%
	Alumhurst Ward	0%	1%	0%	6%	4%	3%	94%	95%	97%
	Dudsbury Ward	0%	0%	0%	16%	23%	10%	84%	77%	90%
	Glendinning Unit	0%	0%	0%	0%	0%	1%	100%	100%	99%
	Harbour Ward	0%	4%	3%	17%	12%	13%	83%	84%	84%
	Linden Unit	0%	0%	0%	33%	26%	39%	67%	74%	61%
	Melstock House	0%	0%	0%	0%	4%	2%	100%	96%	98%
	Nightingale Court	3%	2%	1%	24%	22%	19%	72%	76%	80%
	Nightingale House	0%	0%	0%	10%	9%	8%	90%	91%	92%
	Perinatal In-Patient	0%	2%	1%	0%	1%	0%	100%	97%	99%
	Haven Ward	0%	0%	0%	49%	17%	17%	51%	83%	83%
Dorset	Waterston AAU	0%	0%	0%	32%	18%	32%	68%	82%	68%
	Castletown Ward	0%	0%	0%	39%	28%	23%	61%	72%	77%
	Langdon Ward	0%	0%	0%	0%	8%	3%	100%	92%	97%
	Radipole Ward	0%	0%	0%	36%	37%	40%	64%	63%	60%
	Ryeberry Ward	0%	0%	0%	12%	15%	5%	88%	85%	95%
	Saxon Ward	0%	0%	0%	3%	4%	2%	97%	96%	98%
	Stanley Purser Ward	0%	0%	0%	3%	10%	2%	97%	90%	98%
	Tarrant Ward	0%	0%	0%	6%	9%	0%	94%	91%	100%
	Westminster	0%	0%	0%	1%	10%	4%	99%	90%	96%
	Willows Unit	0%	0%	0%	1%	3%	0%	99%	97%	100%
	Flaghead Unit	0%	1%	0%	0%	0%	0%	100%	99%	100%
	Twynham Ward	0%	0%	0%	37%	22%	29%	63%	78%	71%
	Poole	Chalbury Unit	0%	0%	0%	14%	35%	37%	86%	65%
Fayrewood Ward		0%	0%	0%	2%	6%	6%	98%	94%	94%
Canford Ward*				0%			26%			74%
Guernsey Ward		0%	0%	0%	6%	2%	5%	94%	98%	95%
Hanham Ward		0%	0%	0%	2%	0%	2%	98%	100%	98%
Jersey Ward		0%	0%	0%	9%	3%	15%	91%	97%	85%
Herm		0%	0%	0%	3%	1%	4%	97%	99%	96%
St Brelades		0%	0%	1%	2%	10%	24%	98%	90%	75%
Trustwide	<1%	<1%	<1%	12%	11%	12%	88%	89%	88%	

\*Winter pressure ward, opened January 2015.

Information within the above table has been refreshed for December.

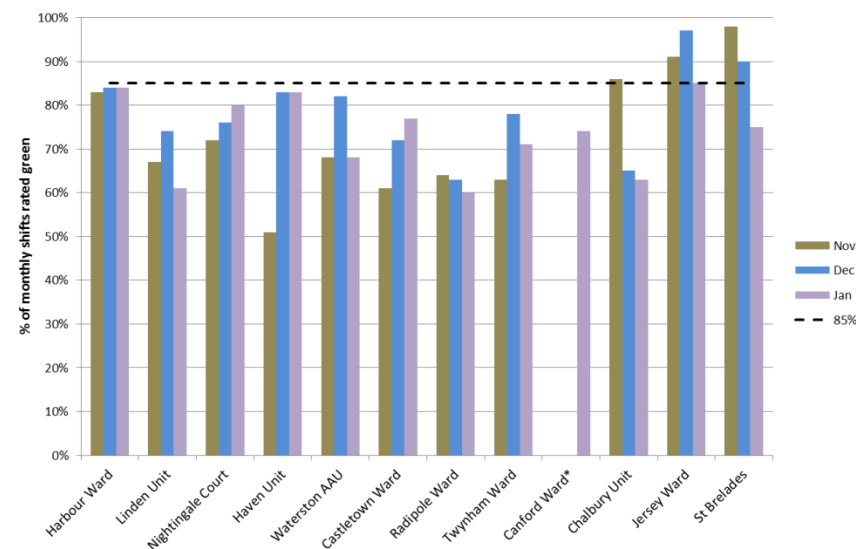
The information in the table is from the Trust's internal staffing tool. This is not the same data submitted to NHS England and shown on the Trust's website.



Red shifts are those with reduced number of staff, shortage of registered nurses compared to planned levels or more than 50% agency staff on duty.

The percentage of shifts staffed to agreed levels during January was 88%, a decrease from December where 89% of shifts were staffed to agreed levels.

The graph shows the percentage of shifts staffed to agreed levels for the last three months for the twelve wards where this was below 85% in January.



A detailed report of monthly staffing data, alongside key indicators of patient safety and patient experience is reported to the Quality Assurance Committee. This report also details information about the specific issues and action being taken related to the above wards.

It is noted that of the 18 shifts rated 'red' for the newly opened winter pressure ward, Canford Ward, 14 were due to the ward not being fully occupied and staffing levels were appropriate.



Black shifts are equal to staffing significant internal events and are reported separately in the report.

# National Staffing Return – January 2015

## Fill rate indicator return Staffing: Nursing, midwifery and care staff

Org: RDY Dorset HealthCare University NHS Foundation Trust  
Period: January 2014-15

Please provide the URL to the page on your trust website where your staffing information is available

(Please can you ensure that the URL you attach to the spreadsheet is correct and links to the correct web page and include 'http://' in your URL)

<http://www.dorsethealthcare.nhs.uk/trust/quality/safe-staffing.htm>

Hospital Site Details		Ward name	Main 2 Specialities on each ward		Day				Night				Day		Night		
					Registered midwives/nurses		Care Staff		Registered midwives/nurses		Care Staff		Average fill rate - registered nurses/midwives (%)	Average fill rate - care staff (%)	Average fill rate - registered nurses/midwives (%)	Average fill rate - care staff (%)	
					Total monthly planned staff hours	Total monthly actual staff hours	Total monthly planned staff hours	Total monthly actual staff hours	Total monthly planned staff hours	Total monthly actual staff hours	Total monthly planned staff hours	Total monthly actual staff hours					
Site code *The Site code is automatically populated when a Site name is selected	Hospital Site name	Speciality 1	Speciality 2														
RDY22	ALDERNEY HOSPITAL	Guemsey Ward	314 - REHABILITATION		1093.5	1123.5	1395	1845	310	500	620	640	102.7%	132.3%	161.3%	103.2%	
RDY22	ALDERNEY HOSPITAL	Jersey Ward	314 - REHABILITATION		1080	1042.5	1395	1987.5	310	480	620	960	96.5%	142.5%	154.8%	154.8%	
RDY22	ALDERNEY HOSPITAL	Herm Ward	715 - OLD AGE PSYCHIATRY		1051	1103.5	2092.5	3367.5	310	410	930	1540	105.0%	160.9%	132.3%	165.6%	
RDY22	ALDERNEY HOSPITAL	St Brelades Ward	715 - OLD AGE PSYCHIATRY		1003.5	1026	2325	3262.5	310	360	1550	1360	102.2%	140.3%	116.1%	87.7%	
RDYER	BLANDFORD COMMUNITY HOSPITAL	Tarrant Ward	314 - REHABILITATION		1155	1350	2092.5	1995	604.5	604.5	302.25	302.25	116.9%	95.3%	100.0%	100.0%	
RDY EJ	BRIDPORT COMMUNITY HOSPITAL	Langdon Ward	314 - REHABILITATION		1041.5	1333.5	1457	1572.5	325.5	609	651	378	128.0%	107.9%	187.1%	58.1%	
RDY EJ	BRIDPORT COMMUNITY HOSPITAL	Ryeberry Ward	314 - REHABILITATION		974.57	1147.07	1395	1792.5	325.5	367.5	651	850.5	117.7%	128.5%	112.9%	130.6%	
RDY38	FAIRMILE HOUSE (ACUTE MENTAL ILLNESS)	Flaghead Unit	314 - REHABILITATION		540	690	432.75	529.75	317.75	317.75	317.75	317.75	127.8%	122.4%	100.0%	100.0%	
RDYEW	FORSTON CLINIC	Melstock House	710 - ADULT MENTAL ILLNESS		751.67	996.67	1085	973	310	320	620	620	132.6%	89.7%	103.2%	100.0%	
RDYEW	FORSTON CLINIC	Waterston AAU	710 - ADULT MENTAL ILLNESS		967.5	960	1395	1545	620	450	620	780	99.2%	110.8%	72.6%	125.8%	
RDYFX	NIGHTINGALE HOUSE	Florence House	710 - ADULT MENTAL ILLNESS		584	779	434	728	317.75	307.5	317.75	492	133.4%	167.7%	96.8%	154.8%	
RDYFX	NIGHTINGALE HOUSE	Nightingale Court	710 - ADULT MENTAL ILLNESS		797.75	691.75	457.25	862.5	317.75	317.75	317.75	328	86.7%	188.6%	100.0%	103.2%	
RDYFX	NIGHTINGALE HOUSE	Nightingale House	710 - ADULT MENTAL ILLNESS		1053.75	1217	1371.75	1540.25	317.75	338.25	635.5	912.25	115.5%	112.3%	106.5%	143.5%	
RDY32	KIMMERIDGE COURT	Kimmeridge Court	710 - ADULT MENTAL ILLNESS		637.5	682.5	465	855	315.27	325.44	315.27	508.5	107.1%	183.9%	103.2%	161.3%	
RDYFT	MAIDEN CASTLE HOUSE	Glendinning Unit	710 - ADULT MENTAL ILLNESS		576.5	636	434	512.75	310	310	310	340	110.3%	118.1%	100.0%	109.7%	
RDYCV	OAKCROFT	Oakcroft	700- LEARNING DISABILITY		150	157.5	135	127.5	0	0	133	133	105.0%	94.4%	-	100.0%	
RDYMR	PEBBLE LODGE	Pebble Lodge	711- CHILD and ADOLESCENT PSYCHIATRY		880	1580	1162.5	525	341	506	1023	1309	179.5%	45.2%	148.4%	128.0%	
RDYEH	PORTLAND HOSPITAL	Castletown Ward	314 - REHABILITATION		1098	1053	1162.5	1215	604.5	497.25	302.25	409.5	95.9%	104.5%	82.3%	135.5%	
RDY10	ST ANNS HOSPITAL	Alumhurst Ward	710 - ADULT MENTAL ILLNESS		1080	1222.5	1860	1995	310	330	620	800	113.2%	107.3%	106.5%	129.0%	
RDY10	ST ANNS HOSPITAL	Didsbury Ward	710 - ADULT MENTAL ILLNESS		930	1207.5	1860	2152.5	315.27	325.44	630.54	813.6	129.8%	115.7%	103.2%	129.0%	
RDY10	ST ANNS HOSPITAL	Harbour Ward	710 - ADULT MENTAL ILLNESS		1035	1035	1395	1515	315.27	294.93	630.54	711.9	100.0%	108.6%	93.5%	112.9%	
RDY10	ST ANNS HOSPITAL	Haven Ward	996 - PSYCHIATRIC INTENSIVE CARE UNIT		1035	1500	2325	1642.5	315.27	325.44	1261.08	1057.68	144.9%	70.6%	103.2%	83.9%	
RDY10	ST ANNS HOSPITAL	Seaview AAU	710 - ADULT MENTAL ILLNESS		1290	1545	1627.5	2017.5	315.27	345.78	945.81	1240.74	119.8%	124.0%	109.7%	131.2%	
RDY10	ST ANNS HOSPITAL	Twynham Ward	712 - FORENSIC PSYCHIATRY		1044.5	1014.5	2325	2190	315.27	315.27	945.81	986.49	97.1%	94.2%	100.0%	104.3%	
RDYFG	ST LEONARDS COMMUNITY HOSPITAL	Canford Ward	314 - REHABILITATION		635	639	815	766	487.5	448.5	243.75	214.5	100.6%	94.0%	92.0%	88.0%	
RDYFG	ST LEONARDS COMMUNITY HOSPITAL	Fayrewood Ward	314 - REHABILITATION		941	971	1674	1629	604.5	604.5	302.25	292.5	103.2%	97.3%	100.0%	96.8%	
RDYFF	SWANAGE COMMUNITY HOSPITAL	Stanley Purser Ward	314 - REHABILITATION		1011.5	1173.5	1131.5	1160.5	310	420	620	560	116.0%	102.6%	135.5%	90.3%	
RDYFE	VICTORIA HOSPITAL W/BORNE	Hanham Ward	314 - REHABILITATION		1036	1111	1395	1680	635.5	635.5	317.75	625.25	107.2%	120.4%	100.0%	196.8%	
RDYFD	WAREHAM COMMUNITY HOSPITAL	Saxon Ward	314 - REHABILITATION		1004.25	1064.25	1162.5	1402.5	310	610	620	490	106.0%	120.6%	196.8%	79.0%	
RDYEG	WESTHAVEN HOSPITAL	Linden Unit	710 - ADULT MENTAL ILLNESS		1103	1061	868	1001	666.5	430	666.5	946	96.2%	115.3%	64.5%	141.9%	
RDYEG	WESTHAVEN HOSPITAL	Radpole Ward	314 - REHABILITATION		1961.5	1681.5	2557.5	3075	906.75	604.5	604.5	1062.75	107.7%	120.2%	66.7%	175.8%	
RDY EY	WESTMINSTER MEMORIAL HOSPITAL	Ashmore/Shaston Ward	314 - REHABILITATION		1125.25	1207.75	1162.5	1185	310	450	620	480	107.3%	101.9%	145.2%	77.4%	
RDYEF	WEYMOUTH COMMUNITY HOSPITAL	Chalbury Unit	715 - OLD AGE PSYCHIATRY		987.5	882.5	1736	1750	294.5	532	1178	893	89.4%	100.8%	180.6%	75.9%	
RDYFC	YEATMAN HOSPITAL	The Willows	314 - REHABILITATION		1955.5	2023	1860	2227.5	651	892.5	976.5	735	103.5%	119.8%	137.1%	75.3%	